

Title

Author

2017-01-09

Contents

1 Section	1
1.1 Subsection	1

1 Section

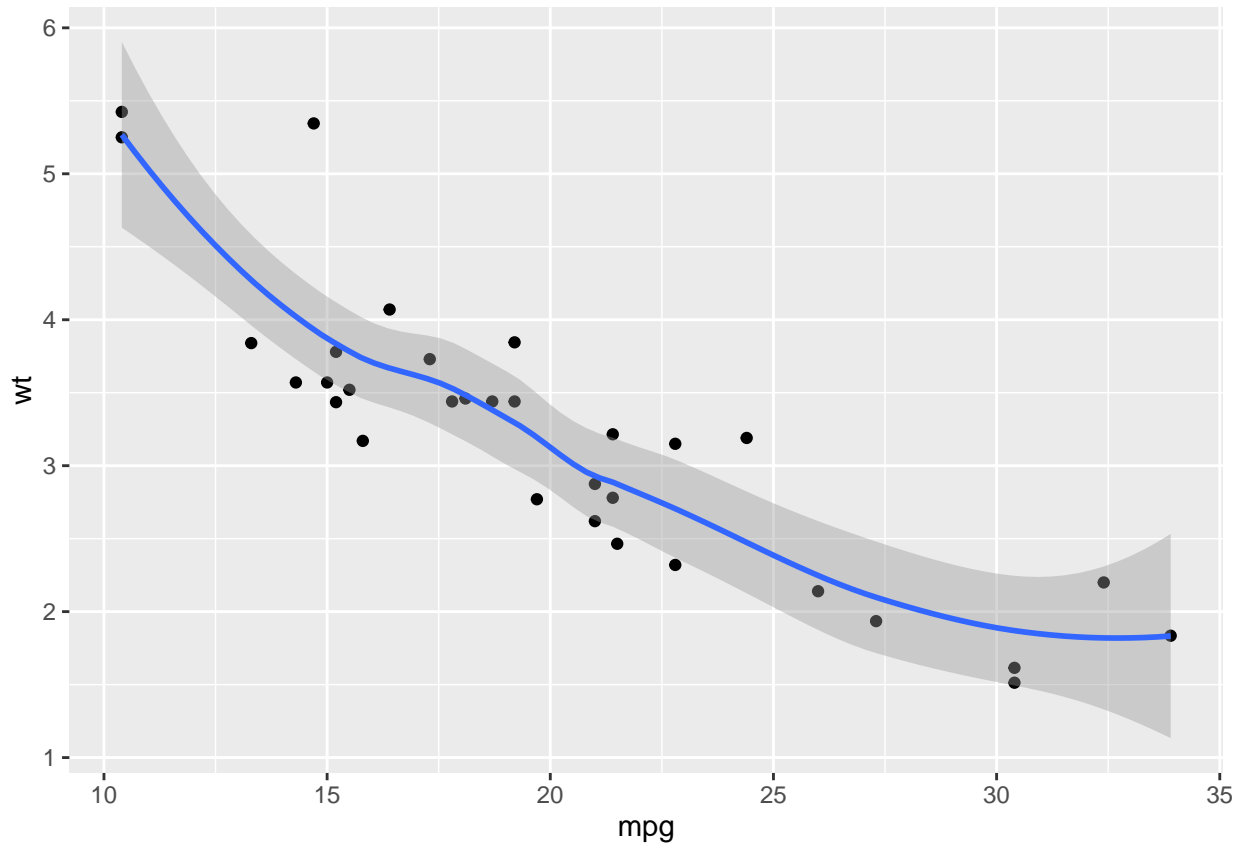
This is a section.

1.1 Subsection

This is a subsection.

This is how you can embed an R code chunk:

```
library(ggplot2)
data(mtcars)
ggplot(mtcars, aes(mpg, wt)) + geom_point() + geom_smooth()
```



```
library(swir1)
library(foreign)
library(lintr)
library(rmarkdown)
library(ggplot2)
library(dplyr)
library(tidyr)
```

This is how you can run in-line R code. The product of 3 and 4 is 12.

End a line with two spaces to start a new paragraph.

This is how you write *italics* (or *italics*), **bold**, `verbatim code`, subscript₂, superscript², endash: –, and emdash: —.

An equation looks like this: $A = \pi \times r^2$

An equation block looks like this:

$$E = mc^2$$

An array of aligned equations looks like this:

$$\begin{array}{rcl} 1 + 1 & = & 2 \\ 1001 + 1 & < & 200000 \end{array} \begin{array}{l} (1) \\ (2) \end{array}$$

This is how you make a comment that will not show in the output document:

This is how you create a link: <http://www.rstudio.com> or link

This is an unordered list:

- item 1
 - sub-item 1 (indent 4 spaces)
 - sub-item 2
 - * sub-sub-item 1 (indent 8 spaces)
- item 2 (add 2 spaces)
 - Continued (indent 4 spaces)

This is an ordered list:

1. item 1
2. item 2
 - i) sub-item 1 (indent 4 spaces) (add 2 spaces)
 - A. sub-sub-item 1 (indent 8 spaces)

RMarkdown is very case sensitive. Every indented / added space and every empty line matters.